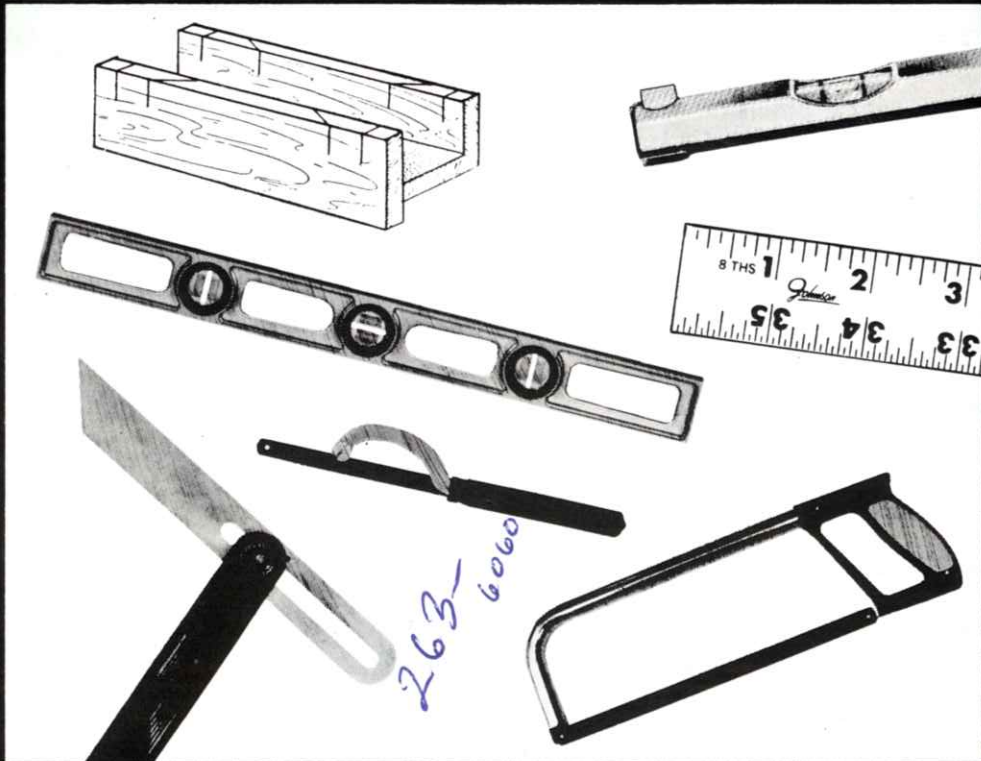




MANUFACTURERS OF FAMOUS

Johnson[®]

QUALITY HAND TOOLS



JOHNSON PRODUCTS CO. INC.

1670 North Jackson Street, Milwaukee, Wisconsin 53202 • (414) 272-2105

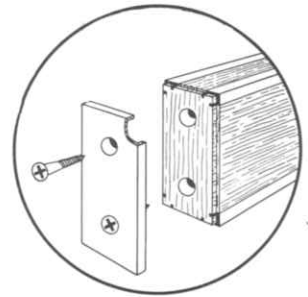
Johnson[®]

MASON'S WOOD LEVELS

JOHNSON'S FINEST SOLID-SET MAHOGANY



Genuine first grade, kiln dried Honduras Mahogany. Precision rolled, double angle, screwless brass binding. Solid set metallic-sealed vials. Protected on both sides by heavy glass lenses. A revolutionary new "Float Surfacing Process" machines the level frame straighter than ever possible before. This custom made machine insures accurate readings from both edges. Longer lengths, 36" to 48", have hand holes, shorter lengths with hand grips. Level size is 2³/₈" x 1¹/₈".



No.	Length and Description	Number of Vials	Individually No. per Carton	Boxed Carton Wt.
548	48" Brass Bound	6	6	25 lbs.
542	42" Brass Bound	6	6	20 lbs.
536	36" Brass Bound	6	6	17 lbs.
528	28" Brass Bound	6	6	13 lbs.
524	24" Brass Bound	6	12	25 lbs.
518	18" Brass Bound	6	6	10 lbs.
948	48" Not Bound	6	6	25 lbs.
942	42" Not Bound	6	6	20 lbs.
936	36" Not Bound	6	6	17 lbs.
928	28" Not Bound	6	6	13 lbs.
924	24" Not Bound	6	12	25 lbs.
918	18" Not Bound	6	6	10 lbs.

THE FIRST ADJUSTABLE, SHOCKPROOF MASON'S LEVEL



Made with the same precision craftsmanship as our solid-set mason's levels, but with a revolutionary patented "Snap-in" vial holder. Made of unbreakable Cyclocac[®], vial holders hold vials firmly but not rigidly without strain — eliminating breakage from shock. Vials are adjustable and easily replaced. Manufactured under Johnson U.S. Patent No. 3,190,010.

Honduras Mahogany — natural finish — 2³/₈" x 1¹/₈"

No.	Length and Description	Number of Vials	Individually No. per Carton	Boxed Carton Wt.
748	48" Brass Bound	6	6	25 lbs.
742	42" Brass Bound	6	6	20 lbs.
728	28" Brass Bound	6	6	13 lbs.
724	24" Brass Bound	6	12	25 lbs.

WHITE PINE — NATURAL FINISH — ADJUSTABLE VIALS



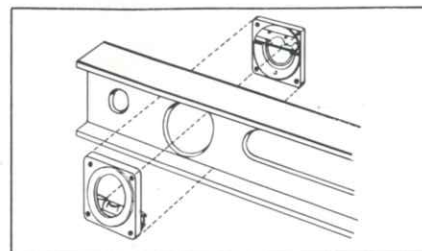
White Pine — natural finish adjustable vials

No.	Length and Description	Number of Vials	Individually No. per Carton	Boxed Carton Wt.
1348	48" Brass Ends only	6	6	12 lbs.
1448	48" No end plates	6	6	12 lbs.

Johnson[®] SHOCK-PROOF, EXTRUDED ALUMINUM LEVELS

LIGHT WEIGHT FRAME — ANODIZED

Top value in economy-priced levels. Made of extruded aluminum, with 3/4" x 2 1/8" frames, anodized finish. Unbreakable Cycholac[®] shock-proof, adjustable, replaceable vial holders hold vials securely without use of glues, binders or putty. Ideal for outdoor and low temperature use. 100% accurate. DROP TESTED over 500 times without damage to vials, protecting window or setting. Manufactured under Johnson U.S. Patent No. 3,190,010, Canadian Patent No. 752,105 and Mexican Patent No. 73,467.



	No.	Length	Number of Vials	Individually No. per Carton	Boxed Carton Wt.
	6212	12"	2	36	25 lbs.
	6218	18"	2	36	32 lbs.
	6224	24"	2	36	42 lbs.
	6418	18"	4	36	32 lbs.
	6424	24"	4	36	42 lbs.
	424	24"	4	36	42 lbs.
	448	48"	4	12	28 lbs.
	624	24"	6	36	42 lbs.
	6628	28"	6	36	50 lbs.
	6636	36"	6	12	22 lbs.
	6642	42"	6	12	26 lbs.
	6648	48"	6	12	28 lbs.
	6872	72"	8	6	22 lbs.

HEAVY WEIGHT FRAME — ANODIZED

Specially designed, heavy weight extruded aluminum frame gives extra strength and durability. Permanent anodized finish. Extra clear viewing from shock-proof, adjustable, replaceable vial holders. Large man-sized hand holes are spaced exactly right for speed and ease in handling and for instant and sure grip in use. Heavy duty frame size: 2 1/2" x 1 1/16".



No.	Length	Number of Vials	Individually No. per Carton	Boxed Carton Wt.
246	24"	6	6	10 lbs.
286	28"	6	6	11 lbs.
426	42"	6	6	16 lbs.
486	48"	6	6	19 lbs.



No.	Length	Number of Vials	Individually No. per Carton	Boxed Carton Wt.
720	72"	10	1	9 lbs.
780	78"	10	1	10 lbs.
840	84"	10	1	11 lbs.
960	96"	10	1	12 lbs.

Johnson®

CAST ALUMINUM LEVELS HEAVY DUTY — SOLID SET



Permanent mold, special alloy frame assures a durable casting without strains. Precision milling insures parallel sides for accurate reading end to end. Will not warp or rust. Non-adjustable, "Solid Set" vials for permanent built in accuracy. Frame size: 2 3/8" x 1".

No.	Length	Number and Type of Vials	Individually Boxed	
			No. per Carton	Carton Wt.
18A	18"	4 plumb, 2 level	6	10 lbs.
24A	24"	4 plumb, 2 level	6	12 lbs.
28A	28"	4 plumb, 2 level	6	13 lbs.
30A	30"	4 plumb, 2 level	6	13 lbs.
48A	48"	4 plumb, 2 level	6	20 lbs.

Johnson®

CARPENTER LEVELS



SOLID-SET, MAHOGANY, TOP READING

Made of the finest, select Honduras mahogany. Uniformly kiln-dried, thoroughly seasoned and air-dried. Clear lacquer finish. Solid-set non-adjustable clear vials marked for easy reading. Level, plumb, 45° vials. Large top reading window. Sealed in protecting glasses. Hand grips for ease in handling. Frame size: 2 3/8" x 1 1/8".

No.	Length	Number and Type of Vials	No. per Carton	Carton Wt.
018	18"	1 plumb, 1 level, 1-45°	6	5 lbs.
024	24"	1 plumb, 1 level, 1-45°	6	6 lbs.
048	48"	1 plumb, 1 level, 1-45°	6	12 lbs.

Johnson®

LIGHT WEIGHT — SOLID SET



Permanent mold cast frame, specially designed to give lighter weight with the same strength and durability. Screened on rule on upper edge. Full-sized hand hole openings for ease in handling. Sturdy glass lenses sealed in to protect against dirt and moisture. Frame size: 2" x 1".

No.	Length	Number and Type of Vials	Individually Boxed	
			No. per Carton	Carton Wt.
2484	18"	2 plumb, 2 level	6	8 lbs.
2484-45	18"	1 plumb, 2 level, 1-45°	6	8 lbs.
2444	24"	2 plumb, 2 level	6	11 lbs.
2444-45	24"	1 plumb, 2 level, 1-45°	6	11 lbs.
2446	24"	4 plumb, 2 level	6	11 lbs.
2486	28"	4 plumb, 2 level	6	13 lbs.

Johnson®

SUGAR PINE — 4 Adjustable Vials



Made of selected, kiln-dried sugar pine. Natural finish with clear lacquer coating. Patented, adjustable, shock-proof, replaceable vial holders. Three round openings with two level vials and one plumb vial at each end. Hand grips for ease in handling. Manufactured under Johnson U.S. Patent No. 3,190,010, Canadian Patent No. 752,105, Mexican Patent No. 73,467. Frame size: 1 1/8" x 2 3/8".

No.	Length	Number and Type of Vials	No. per Carton	Carton Wt.
224	24"	2 plumb, 2 level	6	6 lbs.
228	28"	2 plumb, 2 level	6	7 lbs.

Johnson®

UTILITY LEVELS Sugar Pine — 2 Adjustable Vials TOP READING



An exceptional low priced utility level. Made with the same craftsmanship as other Johnson levels. Two opening, 2 vial with patented shock-proof vial holders. Available with or without top-reading. Frame size: 1 1/8" x 2 3/8".

No.	Length	Number and Type of Vials	No. per Carton	Carton Wt.
118T	18"	1 plumb, 1 level	6	5 lbs.
124T	24"	1 plumb, 1 level	6	6 lbs.
Without top reading				
118	18"	1 plumb, 1 level	6	5 lbs.
124	24"	1 plumb, 1 level	6	6 lbs.

Johnson®

SUGAR PINE — 3 Adjustable Vials TOP READING



An exceptional, economy priced level for the tradesman where the enclosed top reading feature is required. Sealed in protecting window excludes dirt and moisture — vials are always clean and easily read from top or side. Clear natural finish, lacquer coated. Available in three lengths, up to 48 inch. Hand grips for easy handling. A must for plumbers and electricians. Frame size: 1 1/8" x 2 3/8".

No.	Length	Number and Type of Vials	No. per Carton	Carton Wt.
318	18"	1 plumb, 1 level, 1-45°	6	5 lbs.
324	24"	1 plumb, 1 level, 1-45°	6	6 lbs.
348	48"	1 plumb, 1 level, 1-45°	6	12 lbs.

Johnson® WOOD TORPEDO LEVELS



Tapered, streamline shape, handy pocket size. Two and three vial models in red finish pine or natural finish mahogany. Nickered top plate protects level vial. 9 inches long, 1 3/4" high, 5/8" thick, 1 doz. per box. 3 vial has 1 level, 1 plumb, 1 45°; 2 vial has 1 level, 1 plumb.

No.	Description	Vials	Wt. per Doz.
40	Red-Pine	2	3 lbs.
400	Mahogany	2	4 lbs.
45	Red-Pine	3	3 lbs.
450	Mahogany	3	4 lbs.

Johnson® ALUMINUM TORPEDO LEVEL



Aluminum Torpedo Level is intended for use by both professionals and hobbyists. Red and silver finish for greater eye appeal. Level is accurate; permanently lined vials are used; one level, 45° and plumb. Base is grooved for pipe work. Magnetic model has precision ground edges to give unmatched accuracy fitted with extra strong magnet. Holds securely to iron or steel surfaces. Black finish with pitch scale. Both 9" long packed in attractive plastic pouch.

No.	Description	Shelf Pack	Master Pack	Wt. per Box
4500	Red Torpedo	6	72	2 1/2 lbs.
4500M	Black Magnetic	6	72	2 1/2 lbs.

Johnson® BULL'S EYE CIRCULAR LEVEL

NEW! Johnson®

Manufactured Under Patent No. 3,194,172

LEVELER

PREDRILLED SCREW HOLES FOR EASY MOUNTING

LEVEL ANY SURFACE IN ALL DIRECTIONS AT ONCE

SEE REVERSE SIDE FOR MANY USES AND INSTRUCTIONS

FOR MECHANICS AND HOMECRAFTERS

MANUFACTURED BY JOHNSON PRODUCTS COMPANY

1670 North Jackson Street • Milwaukee 2, Wisconsin

An all purpose leveler that will level any surface in all directions at once. Molded of clear plastic, it is virtually indestructible. Ideal for many uses in home, workshop, industry and office.

Mounted on individual display cards.

No.	Diameter	Shelf Pack	Master Pack	Ship. Wt.
100	1 1/4"	6 cards	144	7 lbs.

Johnson® ALUMINUM LINE & SURFACE LEVEL



Hexagonal Case, One Level Vial. Hard drawn 3/8 in. hexagonal aluminum tubing. Special hook design prevents level from falling off line. Bottom surface perfectly flat for accurate surface leveling.

No.	Length	No. per Box	Wt. per Box
555	3 in.	6	9 ounces

Johnson® PLASTIC LINE & SURFACE LEVEL



Made of Cyclocac® durable plastic with unbreakable hooks. Individually packaged, light weight — 1/3 the weight of metal line levels. Fits line up to 1/8" diameter. Solder-sealed vials.

No.	Length	No. per Box	Wt. per Box
500	3"	6	3 ounces

Johnson® INCLINOMETER LEVEL

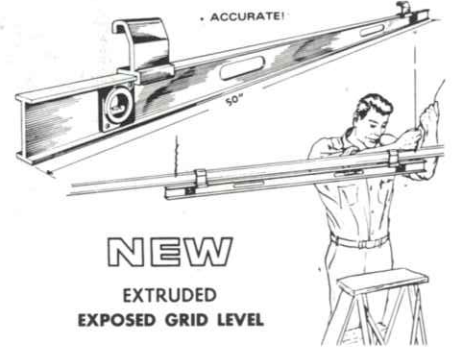


A 24" combination level and protractor in one precision instrument. Reads angles directly for engineers, machinists, mechanics and set-up men. Heavy weight extruded aluminum frame has an anodized finish in black or clear aluminum. Three openings — level vials in one end and plumb in the other. Protractor is in the center opening. 2 styles available — 1 level, 1 plumb or 2 level and 2 plumb vials. Accurate to 1/2 of 1° — gives fast readings from 0° to 90° in any quadrant by merely placing it on the surface to be checked. Individually boxed.

No.	Description	Vials	No. per Carton	Carton Wt.
2421	Aluminum finish	2	6	9 lbs.
2421-B	Black finish	2	6	9 lbs.
2441	Aluminum finish	4	6	9 lbs.
2441-B	Black finish	4	6	9 lbs.

Johnson® GRID LEVEL

NOW AVAILABLE... A FASTER AND BETTER METHOD FOR LEVELLING CEILINGS.



NEW
EXTRUDED
EXPOSED GRID LEVEL

USE OF THIS TOOL WILL REDUCE LABOR AND GIVE AN ACCURATE LEVEL CEILING.

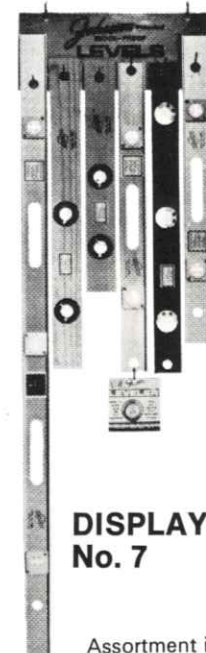
Designed to progressively level your Main Runner from hanger to hanger — merely engage the level on runner and level each hanger individually as you proceed.

This specially designed level also permits levelling from Main Runner to Main Runner 48" O.C. and from Cross Tee to Cross Tee.

GUARANTEED SHOCK-PROOF! PERMANENT ANODIZED FINISH! FULLY ADJUSTABLE! SNAP-IN VIAL HOLDERS!

No.	Length	Vials	Pack	Wt.
50G	50"	2 level	1 per box	5 lbs.
50BR	Brackets		2 per set	1/2 lb.

Johnson® LEVEL MERCHANDISER



SPECIAL
"SPACE-SAVER"

FREE
DISPLAYER
PLUS

An assortment of best selling levels to give you a PROFIT OF 60% on dealer cost.

DISPLAY No. 7

Assortment includes 7 level styles:

ALUMINUM	2-48 inch 6 vial (6648)
	2-24 inch 2 vial (6224)
	1-24 inch 4 vial (6424)
	1-24 inch 3 vial (43-B)
WOOD	1-18 inch 2 vial (118T)
	1-24 inch 2 vial (124T)

SURFACE LEVELERS* 4-Carded No. 100
Display board and levels in one carton

Johnson[®] **UTMOST PROMOTIONAL LEVEL**

12, 18, and 24 inch lengths



The **UNIQUE-DESIGN** eliminates the need for protecting lenses and permits easy removal of vial and replacement without removing the vial holder from the level without disturbing the setting.

TWO and THREE VIAL TYPES feature snap-in Replaceable Vials. **PRICED LOWER THAN ANY LEVEL** ever offered. A **HIGH QUALITY ATTRACTIVE and DEPENDABLE Instrument. ALUMINUM** in clear or Blue permanent **ANODIZED Finish**.

The aluminum extruded frames are the same size, alloy and shape as used in our well known regular levels, anodized in satin smooth clear aluminum or beautiful Indigo Blue.

Available only from us thru our representatives. **NO OTHER FIRM MAY MAKE OR SELL THESE LEVELS** — a **JOHNSON EXCLUSIVE** (U.S. Pat. No. 3,190,010; Canada and Mexico; other patents pending.) (Special 4 doz. pack available on request.)

No.	Length	Color	Vials	No. per Ctn.	Wt. per Doz.
22	12"	Clear	2	12	6 lbs.
82	18"	Clear	2	12	10 lbs.
82-B	18"	Blue	2	12	10 lbs.
42	24"	Clear	2	12	12 lbs.
42-B	24"	Blue	2	12	12 lbs.
43	24"	Clear	3	12	12 lbs.
43-B	24"	Blue	3	12	12 lbs.

Johnson[®] **ALUMINUM YARDSTICKS AND SHORT RULES**



Made from tempered extruded aluminum; smooth anodized finish; heat treated for extra strength and flexibility. Large clear numerals with 8th and 16th inch increments. Straight and parallel edges. Durable epoxy ink heat baked for permanent adhesion. Accurate and long lasting. Hang hole for storing. Packed 10 to shelf carton, 50 in outer pack. 1 1/8 inches wide, .075 inch thick.

No.	Printed	Shelf Carton	Master Carton	Ship. Wt.
J 236-36"	two sides	10 ea.	50 ea.	17 lbs.
J 136-36"	one side	10 ea.	50 ea.	17 lbs.
J 124-24"	one side	10 ea.	50 ea.	12 lbs.
J 118-18"	one side	20 ea.	100 ea.	17 lbs.
J 112-12"	one side	20 ea.	100 ea.	12 lbs.

Johnson[®] **HACKSAWS MINI-SAW**

No. 60



Uses regular hack saw blades or even broken ones. Durable all steel frame with non-slip vinyl grip. Cuts flush even in confined areas. Does everything a big saw will do and more. Attractively carded for easy selling. One saw per card. Blade is included.

No.	Shelf Pack	Master Pack	Wt. per Doz.
60	6	72	4 lbs.

Johnson[®] **HACKSAWS REVOLUTIONARY DESIGN**



No. 365

The only hacksaw with lever action blade tensioning, without thumb nuts. Push button adjustment for 10" and 12" blade lengths. Flush cut — both vertical and horizontal positions — without marring surface. Internal blade storage. Heavy nickel chrome plated steel frame — will not rust. Full 4" clearance depth. Comfortable handle with proper pressure angle. **PROFESSIONAL QUALITY — FOR THE MAN WHO WANTS THE VERY BEST.**

No.	Shelf Pack	Master Pack	Wt. per Doz.
365	12	72	15 lbs.

Johnson[®] **TUBULAR HACKSAW FRAMES**



No. 600

No. 65



Adjustable tubular frame with die cast aluminum handle. Accommodates 10" and 12" blades. Internal blade storage. Comfortable, easy grip handle. Comes with one blade.

No.	Packing	No. per Carton	Carton Wt.
65	Poly Bag	36	33 lbs.
600	Individually Boxed	36	50 lbs.

Johnson[®] **ECONOMY HACKSAW FRAME**

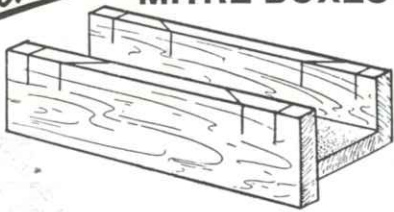


No. 50

A good, dependable highly plated frame. Sturdy plastic handle with pistol grip. Equipped with 8" blade. Adjustable for 8", 10" and 12" blades. Blade can be faced in four directions.

No.	Shelf Pack	Master Pack	Wt. per Dozen
50	12	72	12 lbs.

Johnson® MITRE BOXES



Ideal for the "Do-It-Yourself" handyman or the Experienced carpenter. A sturdy box for cutting simple cross cuts and miters. Sides and bottom made of 3/4 inch select straight grained kiln-dried wood. Slotted for left or right miters at 45 degrees and for right angle cut-offs. For use with panel or back saw. Sides screwed, one side offset for holding box firmly against edge of workbench.

No.	Length	Kind of Wood	Shipping Case	Ship. Wt.
1200	12 inch	Hardwood	1/2 dozen	13 lbs.
1600	16 inch	Hardwood	1/2 dozen	18 lbs.

Johnson® FLOATS

ALL JOHNSON FLOATS ARE DESIGNED FOR THE PROFESSIONAL CEMENT WORKER

REDWOOD FLOAT



Professional quality. Made of genuine California Redwood with comfortable mansized handle. STRONG, LIGHT AND DURABLE.

No.	Size	No. per Carton	Carton Wt.
FW612	5x12x3/4"	12	14 lbs.
FW615	5x15x3/4"	12	17 lbs.

Johnson® ALUMINUM FLOAT



Extruded from the hardest known aluminum alloy. Heat treated for durability and long life. Large comfortable handle. Rounded edges. SIZE: 3 1/4 x 16 x 3/8".

No.	No. per Carton	Carton Wt.
FA616	12	12 lbs.

Johnson® MAGNESIUM FLOATS



This float is made of the hardest magnesium for durability and long life. Light in weight. Large, comfortable mansized handle.

No.	Size	No. per Carton	Carton Wt.
FM612	3 1/2"x12"	6	8 lbs.
FM616	3 1/2"x16"	6	9 lbs.
FM620	3 1/2"x20"	6	10 1/2 lbs.
FM624	3 1/2"x24"	6	12 lbs.

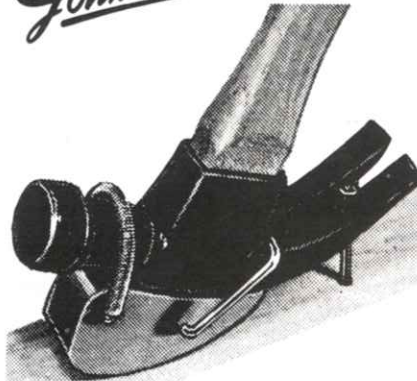
Johnson® RUBBER FLOATS



Designed for the professional cement worker and plasterer. Available in either 1/2" or 3/4" and fine or coarse cell rubber. Sponge rubber pad cemented to aluminum backing for rigidity. Long wearing rubber.

No.	Size	No. per Carton	Carton Wt.
FR61 (Fine)	9x4x1/2"	12	7 lbs.
FR62 (Coarse)	9x4x1/2"	12	7 lbs.
FR63 (Fine)	9x4x3/4"	12	9 lbs.
FR64 (Coarse)	9x4x3/4"	12	9 lbs.

Johnson® NAIL PULL

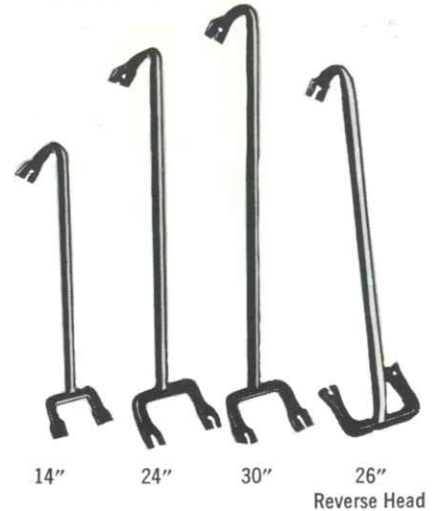


Turn your hammer into a double-duty beauty that pulls the longest nails easily, without a block! Nail-Pull attaches quickly to most any claw hammer and gives the extra leverage you need without marring the surface. Weighs just 1 1/2 ounces, stays on the hammer at all times. Molded from amazing, durable Cyclocac®. Attractively carded for impulse buying.

No.	No. per Carton	Wt. per Carton
N.P.	10	1 1/2 lbs.

Johnson® SAV-IN' BARS

Save It — Don't Wreck It



New advance in bar design with practical bar head. Two prongs lift flooring, siding and sheeting on underside free of wood joists and studding. Prohgs straddle joists, gripping boards on both sides of nail fastener. Rolling action removes boards without splitting or breaking. Four styles — six bars per carton.

Bar No.	Size	Weight per Bar
30	3/4"x30"	4 1/4 lbs.
reverse head	3/4"x26"	4 1/4 lbs.
24	3/4"x24"	4 1/4 lbs.
14	1/2"x14"	1 lb.

Johnson® SLIDING T-BEVEL



made for the craftsman who appreciates the best

USE FOR LAYING OFF WINDOW SILLS, RAFTER CUTS, RIDGE ANGLES, SETTING TABLE SAW MITRES

Blade Bright
Nickel Plated
Full Hard Steel
Tempered
8"x1"x.053"
Positive Wing
Nut Clamping
at any Angle
Unbreakable
Cyclocac Handle

Catalog No.	Shelf Pack	Master Pack	Master Wt.
B-75	6 ea.	36 ea.	10 lbs.

Individually Carded

GUARANTEE

Every Johnson level and tool is guaranteed to be mechanically accurate, free of imperfections in material and defects in workmanship. Rigid inspection safeguards Johnson's reputation for Quality.

Any defective Johnson level or tool will be repaired or replaced, without charge. However, we do not assume responsibility for breakage where no flaw appears; nor will we replace or repair at our expense any tool which has been abused, tampered with, or bears carving or stamp of owner's name, or shows evidence of excessive use. Any tool claimed to be defective must be returned by the owner, carrying charges prepaid, with letter explaining claim. **WHOLESALERS AND DEALERS ARE NOT AUTHORIZED TO MAKE REPLACEMENTS.**

SALES POLICY AND PRICES

Johnson Levels and tools are sold and distributed only through recognized hardware wholesalers and industrial supply distributors.

Prices of all items shown in this catalog will be found in our current Price List. All orders are accepted and invoiced by us at prices in effect at time of shipment.

SALES OFFICES

SAUL TUGMAN

200 S. Washington
Royal Oak, Michigan 48067
Phone: 313-030-2244

R. A. YEAGER, INC.

P.O. Box 147
Middletown, New Jersey 07748
Phone: 201-671-3146

DONALD E. SAVARD CO.

126 E. Valley Boulevard
Alhambra, Calif. 91801
Phone: 213-283-0504

G. C. HUNNEWELL CO., INC.

P.O. Box 1077
Framingham, Mass. 01701
Phone: 617-877-2536

G. C. HUNNEWELL CO., INC.

P.O. Box 473
Crystal Lake, Ill. 60014
Phone: 815-459-5551

KENNETH HOUT

P.O. Box 4282
Portland, Oregon 97208
Phone: 503-254-7006

EDGAR H. FARRAR & ASSOC.

P.O. Box 277
Temple, Texas 76502
Phone: 817-778-1941

MARVIN STAMM AND CO.

156 E. Walnut Park Drive
Philadelphia, Pa. 19120
Phone: 215-927-3035

FOREIGN SALES OFFICES

E. J. HORNEY LTD.

3325 Lakeshore Rd.
Burlington, Ont., Canada
Phone: 416-637-9861

DAVID L. PATERSON & ASSOCIATES LTD.

1014 Seaham Crescent
Vancouver, B.C. Canada
Phone: 604-277-4902

JOHNSON PRODUCTS CO. INC.

1670 North Jackson Street, Milwaukee, Wisconsin 53202 • (414) 272-2105